

# CERTIFICATE OF LOCATION OF GOVERNMENT CORNER

NORTH 1/4 Corner of Section 19, Township 105, Range 42, 5TH P.M.

STATE OF MINNESOTA, County of MURRAY

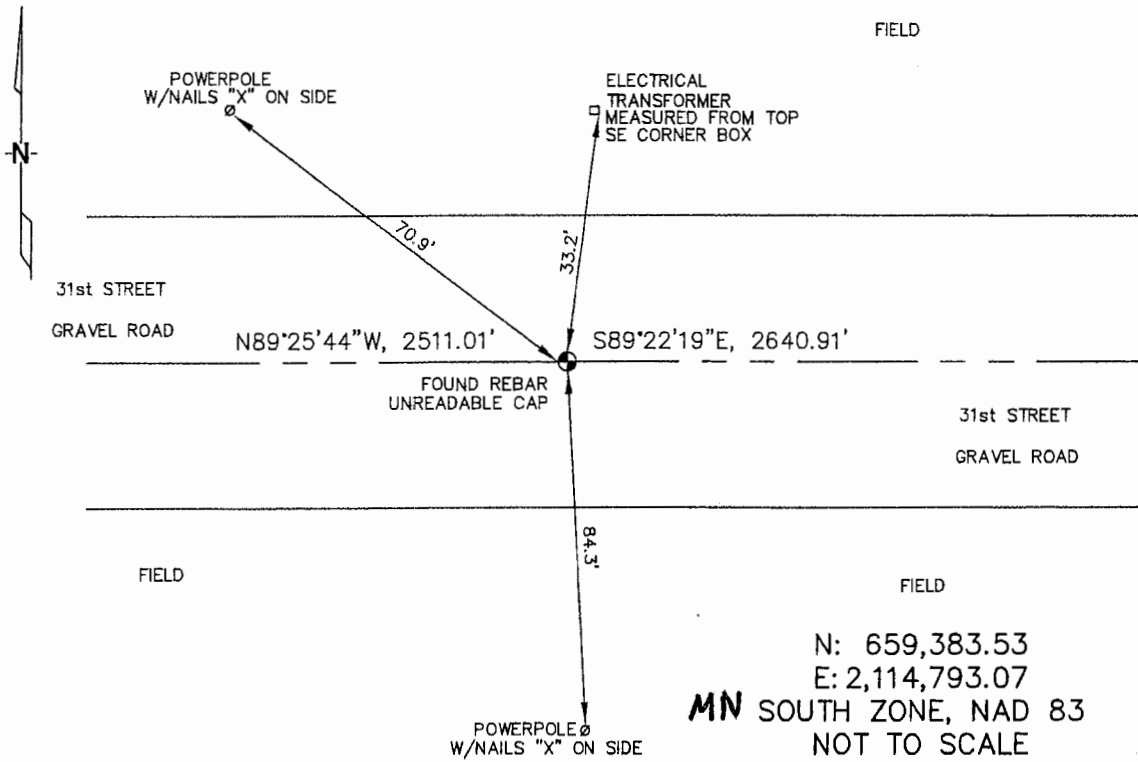
At the corner location shown on the sketch :

On 3/15/2006 found REBAR WITH UNREADABLE CAP, IN GRAVEL ROAD.

left monument as found,  lowered monument,  removed monument (explain)

On \_\_\_\_\_ set \_\_\_\_\_

### Sketch of reference ties



Statement of evidence relative to this corner location is on back page

I hereby certify that this document and the data contained herein was prepared by me or under my direct supervision.

Thomas V. Zeff  
Thomas V. Zeff  
Registration No. 44563  
Date 4/20/06

- Land Surveyor,  Professional Engineer
- County Surveyor,  County Engineer

### OFFICE OF THE COUNTY RECORDER

County of \_\_\_\_\_

**SEP 28 2006**

I hereby certify that this document was filed in the Co. Recorders office at \_\_\_\_\_ .M. on the \_\_\_\_\_ day of \_\_\_\_\_ A.D. , 20

County Recorder James V. Johnson  
By \_\_\_\_\_, Deputy

DOCUMENT NO. \_\_\_\_\_

STATEMENT OF EVIDENCE:

NORTH 1/4 CORNER, SECTION 19, T. 105 N., R. 42 W.,  
MURRAY COUNTY, MINNESOTA

- 1861 D.W. Wellman & S.S. Smoot, US. Deputy Surveyors, monumented corner.
- 3/15/2006 Uiteig Engineers, Inc., Survey Crew, Brain Payne Party Chief, found a rebar with an unreadable cap, in the C/L of gravel road.  
Ties: NW-70.9' to nailed "X" on power pole;  
NE-33.2' top, SE corner, electrical transformer box;  
SE-84.3' to nailed "X" on power pole;  
E-2640.91' to NE corner, Section 19;  
W-2511.01' to NW corner, Section 19.